

ANGELS CAMP MUSEUM FOUNDATION

Visit our web-site at:
www.AngelsCampMuseumFoundation.org

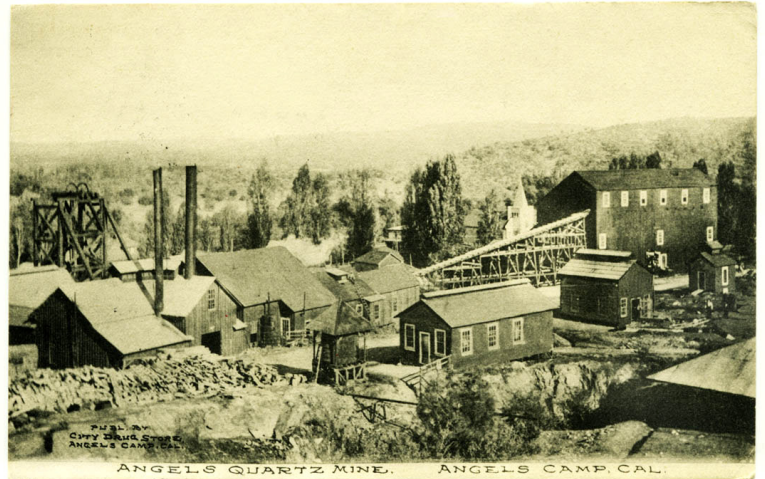
The ANGELS CAMP MUSEUM GOLD RUSH HISTORY

The Angels Camp Museum property is located on and near lands that were mined from the earliest days of the Gold Rush. China Gulch, located behind the Museum, was placer mined by Chinese from the earliest years, while the property itself was the site of the Angels Deep Mine, one of the most important during the 1880s-1900s hard rock mining boom.

Placer mining on China Gulch began in the earliest years of the Gold Rush but was soon exhausted. In 1854, however, the gold-bearing ores in the Davis-Winter vein (northerly on Main Street) were discovered. Arrastras and quartz mills were constructed and the boom was on for quartz mining. For the next three years the vein was developed all the way from Altaville south to Angels Creek. The boom quickly collapsed, however, due to the low tenor of the ore and the problem with processing sulphurets.

It wasn't until the late 1880s that the next big hard rock mining boom began with the consolidation of mining claims, improved technology, and investment capital. The original claims were consolidated into three ownerships: the Sultana, Angels, and Utica, with the Lightner developed in 1896. At the height of these mining activities a total of 320 stamps were dropping, recovering more than \$25,000,000 in gold before closing down by World War I.

By the 1870s, the property which is now the Museum was occupied by the residences of three quartz miners residing directly east across Main Street from the Angels Quartz Mine, which was soon to take over the property. The Angels Mine, consolidated in 1884 by James V. Coleman from the Doctor Hill, Potter, and Maltman Lodes, ultimately consisted of six patented claims and one placer claim.



By 1900 the mine was only 500 feet deep but \$65,000 in debt, when it was assessed for two steam-power hoists, a mill building, air compressor shop, two houses, office, barn and fence, valued at \$7,000; not much when the Angels Hotel was valued at \$10,000. Shortly thereafter, however, Coleman hired experienced engineer Thomas Fullen and foreman Charles Jacobs to modernize and deepen the mine. They added an air compressor to eliminate hand drilling, built a sawmill to frame timbers on site, remodeled the blacksmith and machine shops, junked the faulty ball mill, enlarged the 20-stamp steam-powered mill on the Potter mine site to 40-stamps, and added vanners to improve recovery.

In 1902, Coleman purchased a portion of the future Museum property from Mrs. Julia Walsh, with the proviso that she could occupy the house and garden for her lifetime. The purchase price was \$3000 and included paying for any damages to the residence. Although not specifically noted in the assessment records, Coleman apparently built the Overshot Water Wheel on the property in 1902 to operate an arrastra as secondary gold recovery for the mine. The mine operated almost continuously until shut down by World War I, the longest operating mine in Angels Camp. At that time the shaft was 850 feet deep with a winze extended to the 1050 foot level. (Visit the website for more information on the mine and wheel)

In the late 1940s, William G. "Dan" Daniels and his wife Alice asked the City of Angels and local civic clubs to help him build a display for the rocks and local artifacts that he had collected. He purchased the property and constructed what is now the main Museum building. In 1951 he opened up his display to the public while he and his wife resided downstairs. The building and property were donated to the city when the Daniels passed away.



EVENTS & ACTIVITIES

- GOLD RUSH DAY -
Miners' Heritage - May 7th
- FROGJUMP - Calaveras
County Fair - May 19th-22nd
- Hogarth Gold Stamp Mill
Dedication - July 2011
- Paul Raggio Water Fountain
Dedication - May 17th
- Public Programs, Activities
and Tours - FALL 2011

For additional information
please visit our web site at
www.angelscampmuseumfoundation.org

Thank You!

A heartfelt **Thank You** to the
Friends and Family of Emily Stemler.

Emily started her service with the Museum in 1983. She enriched the lives of many visitors with her passion for preserving the historical legacy of Angels Camp. Emily, was blessed with an incredible gift of recollection and enthusiasm for her community. She reminds us to never lose touch with our past and always reach out and help in our communities. Contributions made on Emily's behalf are held in an account which will be utilized with respect to Emily and her family.

Thank You to Roy Daniels for the continued generosity of the Daniels Family. Your contribution will help perpetuate the original vision of your Aunt and Uncle. Thank you very much.

WELCOME

NEW MUSEUM DIRECTOR- CRAIG HADLEY

I would like to take the opportunity with my first column in the newsletter to tell you a bit about me and my ideas. First, I am a guy who is passionate about history and museums. It's why I choose it as a profession. My love of history goes all the way back to when I was a 15 year old boy on a family trip to the Gettysburg Civil War battlefield. I was walking alone on Cemetery Ridge along a line of cannons when suddenly I tripped on something. I looked down at my feet and saw a spent Minnie ball bullet sticking partly out of the dirt. I bent down and pulled it out and suddenly the hair on the back of my neck stood up. I realized that I was the first person to touch this bullet since it had been fired in anger more than a century before. I began to wonder who fired it, and who was the target, did they survive the battle or where they captured or killed? Was he a young boy like me caught up in the whirlwind or a grizzled veteran? As these questions and many more flooded my head I began to hear the crash of musketry and the screams and cries of battle surround me. For a moment, just a fleeting moment, I had been transported back in time and was there at the battle in all of its gory carnage. I was hooked. From that point forward I have had a love of history.

Next, as Director, my job is to bring my vision and experience to the museum, lay out a short and long-term plan and then once approved, implement that plan. I believe museums are and should be about telling stories, and not about just a bunch of artifacts. I see tremendous potential with the Angels Camp Museum. My future plans with the museum will be a group effort that will require support from the Foundation, the Commission, the City, and each and every one of you. There will be changes over time, and not everyone will agree with the changes. However, I promise that these will be positive changes that will help the museum tell the story of Angels Camp and the people who made up the area from the first Native Americans who walked these woods, to the first trapper and pioneer who saw the beauty of the hills and valleys, to the first prospector who began to shake as he saw the first colors of gold in his hands.

I promise you all that I will be open and transparent with my plans for the future of the museum and keep you all informed as we move forward. Feel free to call me if you want to talk and find out more. My door is always open. In the end, my goal is to give visitors to the museum the same experience I had as a 15 year old boy standing on a distant battlefield that illuminating experience of history and the stories that it can tell us, and in doing so, teach us something of ourselves.



VISIT THE MUSEUM BOOTH AT THE FAIR

The Museum Foundation
in conjunction with
the U.S. Postal Service, local Angels Camp office,
will be offering a special, unique, and collectible
Mark Twain postage stamp
with envelopes and cancellation stamp
to commemorate the author.

The Celebrated Jumping Frog of Calaveras County
create a legacy for Angels Camp and
kicked-off the career of Samuel Clemens.

More details to follow..
Visit the web site or Museum Gift Shop



**RESERVE your
commemorative
stamp and
Limited Edition
envelope.**

ANGELS CAMP MUSEUM FOUNDATION

MOVING FORWARD....

WELCOME NEW DIRECTORS

The Foundation is excited to announce the addition of four new Board Directors and the new Museum Director, Craig Hadley.

Susan Sheehan - Susan retired to Calaveras County seven years ago and has since been involved with county and other non-profit organizations. She is a Fourth generation Californian who enjoys local history and thinks that perpetuating the future of the museum is extremely important to our community.

Billie Westernoff - Billie recently retired after 18 years, as the Program Director of the Resource Connection Food Bank. Her experiences include grant writing and fundraising. She says she will be a "Worker Bee" for ACMF.

James Luly - Jay is a Fourth generation Calaveras County native with a wealth of local knowledge. He spent 30 years in the printing business and has always been active with community organizations. He is excited to share his knowledge of local history to help promote the Museum.

Craig Hadley - Craig has been a museum professional and public historian for over 20 years. He has worked as a consultant for the History Channel, the United States military and the South Carolina State Guard. Craig has created several award-winning museum educational programs for 3rd, 4th and 5th grade students. He is a native of South Carolina and recently became a resident of California when he got married to Jesse, last year. (She is the new Executive Director of the Lake Tahoe Maritime Museum.) Craig looks forward to working with the volunteers and staff of the museum. The Foundation looks forward to working with Craig.



FOUNDATION DIRECTORS

Lori Bloathner-Kautz , *President*
Judith Marvin, *Vice President*
Kathy Dodge, *CFO*
Lisa Jackson, *Secretary*
Bob Petithomme
Tad Folendorf
Lolly VerHalen
Susan Sheehan
Billie Westernoff
James Luly

The Museum Foundation Newsletter is sent to Museum Members. It can be viewed on our website at www.AngelsCampMuseumFoundation.org To contact the Foundation, please leave a brief message and contact information with Museum staff at (209) 736- 2963 Your call will be returned as soon as possible.



Angels Camp Museum Foundation
 PO Box 1385
 Angels Camp, CA 95222

The ANGELS CAMP MUSEUM FOUNDATION presents

Free Admission
 One Day ONLY!

Gold Rush Day



ANGELS CAMP MUSEUM

A fun day for the entire family!



Living Historians
 Musket Firing
 Demonstrations
 Artisans
 Craftsmen
 Live Music
 Food and Drink!

Frog Jump
 Gold Panning
 Games and Activities

Saturday, May 7th 9AM-4PM

For more information and a schedule of activities visit:
www.angelscampmuseumfoundation.org

ANGELS CAMP MUSEUM - HWY 49 - ANGELS CAMP
 753 SOUTH MAIN ST., ANGELS CAMP | 209 736-2963

JOIN US!

- *Toss a Salami
- *Learn about the life of a Gold Miner
- *Pan for Gold
- *Learn about the life of a Civil War Soldier
- *Coins in a Haystack
- *Enjoy time with family and friends at the Angels Camp Museum—FREE (One day only!)

**SPECIAL THANKS !
 TO OUR
 SPONSORS AND FRIENDS**



**BANK
 OF
 STOCKTON
 FROG JUMP
 COMMITTEE**

**LIVING HISTORIANS
 ARTISANS
 CRAFTSMEN
 Saddle Queen
 Contestants**



**SAVE MART
 SUPERMARKETS**

Your Life. Your Town. Your Store.